

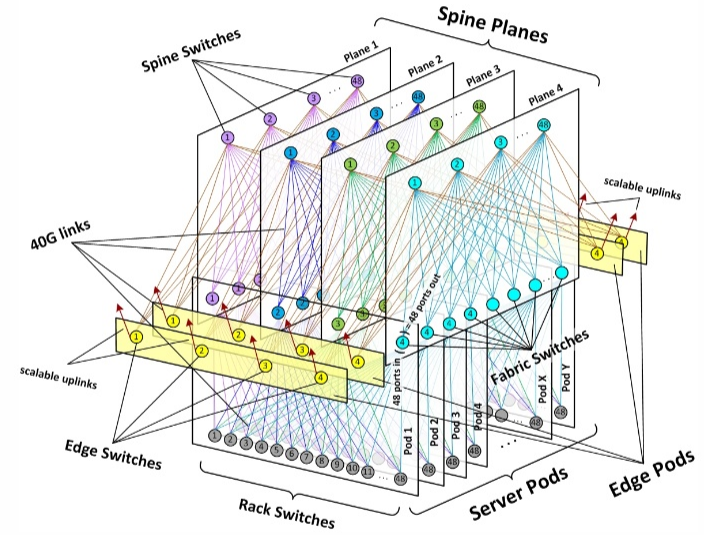


At Astrape we enable the transition to fully optical data networks for a faster and more sustainable internet.

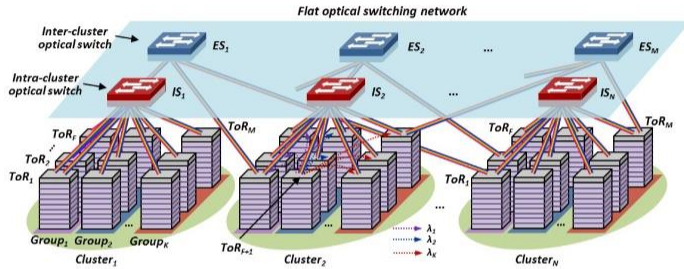
THE VERGE 2022

**THE ELECTRICITY DEMANDS OF DATA  
CENTERS ARE MAKING IT HARDER TO  
BUILD NEW HOMES IN LONDON**

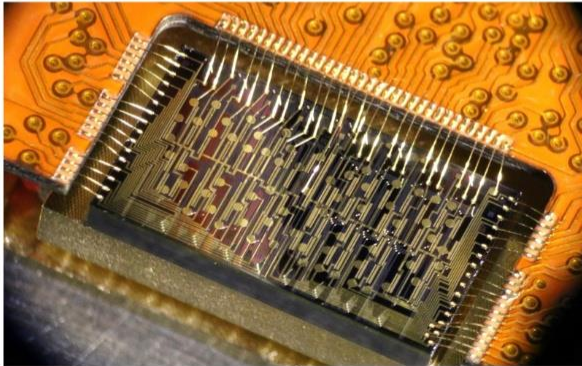
**THERE ARE MORE THAN HALF MILLION  
POINTS  
WHERE SIGNALS ARE CONTINUOUSLY  
CONVERTED FROM ELECTRICAL TO OPTICAL**



# ASTRAPE GETS RID OF USELESS CONVERSIONS!



- Transmits data from A to B fully optically with 75% less conversions
- 20% (at least) reduction of the datacenter energy needs
- it will sustain performance scaling for at least 15 years.



# WHAT WE ACTUALLY DO

```
require File.expand_path("../..", __FILE__)
# Prevent database transactions in the console
abort("The Rails environment is running in console mode. Please use rails console instead.")
require 'spec_helper'
require 'rspec/rails'

require 'copybara/rspec'
require 'copybara/rails'

Copybara::javascript_driver = :webkit
Category.delete_all; Category.create(:name => "Shoulda:Matchers.configure do |config|
  config.integrate do |with|
    with.test_framework :rspec
    with.library :rails
  end
end

# Add additional requires below

# Requires supporting ruby files
# spec/support/ and its subdirs
# run as spec files by default
# in _spec.rb will both be run
# run twice. It is recommended
# end with _spec.rb. You can
# make an exception by using
# No results found for 'mongoid'
# ...

```

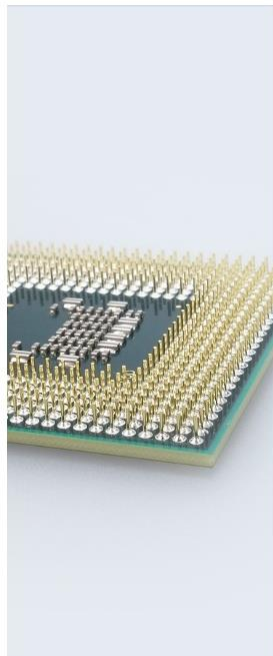
Networking Software Stack



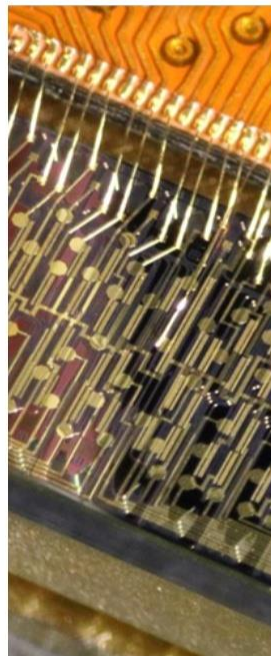
Network Interface Cards



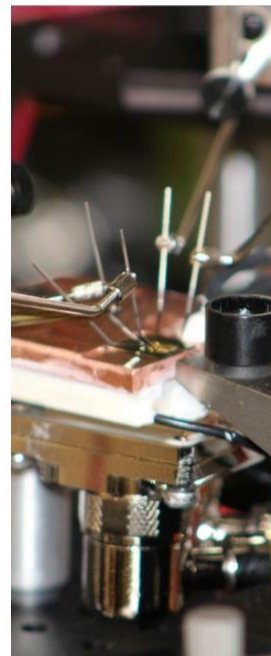
Optical Switches



Custom ICs



Integrated Photonic ICs

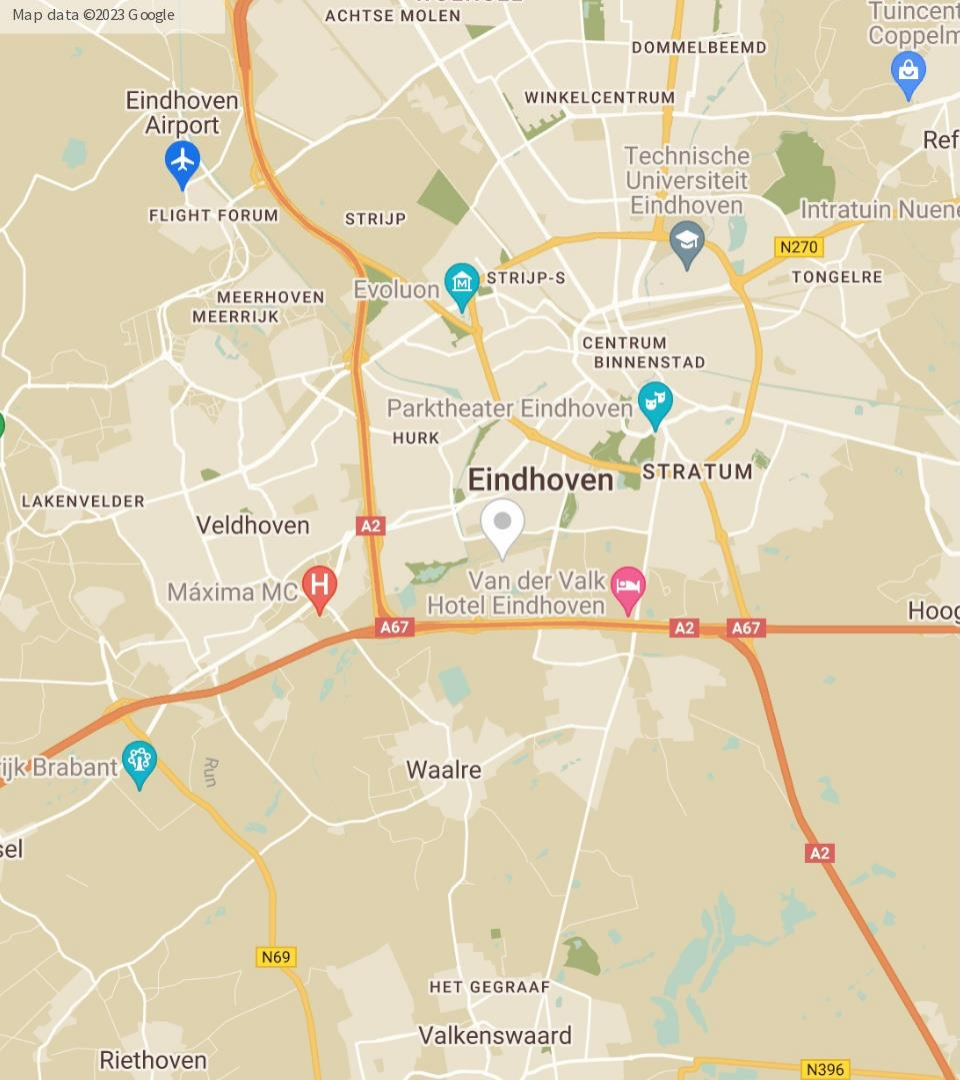


Electro-optical Interfaces



# WE HERE TO MEET RESEARCH AND MARKET EXPERTS IN

- ✓ Integrated Photonics Technology
- ✓ High Performance Computing
- ✓ Datacenters



# CONTACT US

HighTech Campus 27, 5656 AA Eindhoven, The Netherlands



[francesco@astrape.net](mailto:francesco@astrape.net)



[willemjan@astrape.net](mailto:willemjan@astrape.net)



[www.astrape.net](http://www.astrape.net)



[www.linkedin.com/company/astrape-networks](https://www.linkedin.com/company/astrape-networks)



SCAN ME