



Sempro Technologies

Photonics presentation

20 June 2023

Confidential  
Do Not Duplicate or Distribute

INTERNAL ANALYSIS  
Leadership Team

Ewald Peters

CEO



Mr. Peters is a veteran semiconductor entrepreneur and executive, with over 30 years of experience. He launched the Advanced Packaging Centre and Holland High Tech Centre China (HHTCC) and worked with Boschman Technologies as a specialist in encapsulation.

Djuri Jámbor

CFO



Mr. Jámbor is a financially driven and experienced CFO. He has been involved in many growths and is an indispensable asset for Sempro.

Sherry Xue

Operations manager China



Ms. Xue is graduated from the Lianoning University. Has been working several years for the government foreign affairs and business negotiation consultant for dutch companies to set up their business in China.

HP Sim

Operations manager Malaysia



Mr. Sim is working in the semiconductor industry for almost 50 years. He joined the NSEP and mostly worked as a senior sales service engineer after. Now he has been at Sempro for 14 years and he is a specialist in operation managing.

Advisory  
Board



Hans Scholten

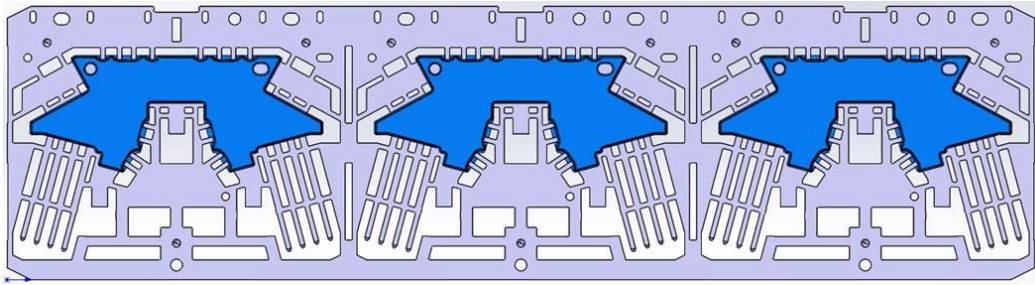


Harry Diepenmaat

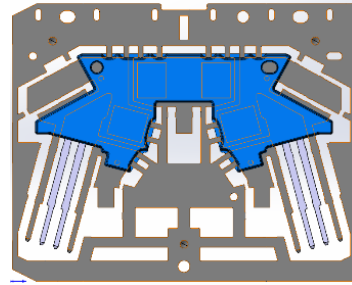
Confidential



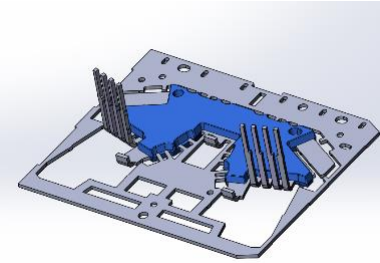
# THE PRODUCT Core (Process) Business



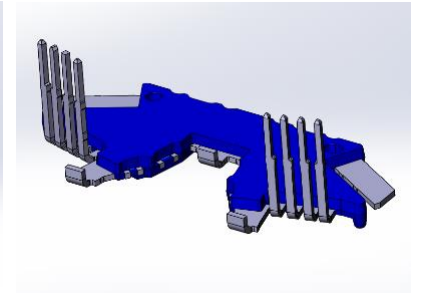
→ Input material



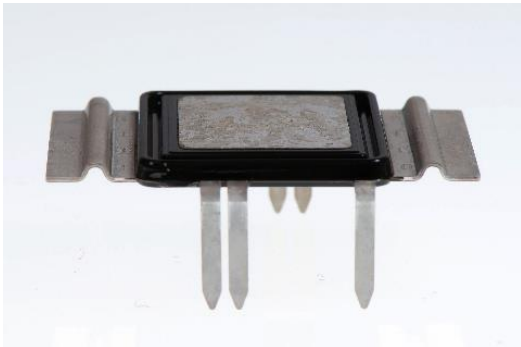
→ Dambar Cut



→ Forming



→ Singulation

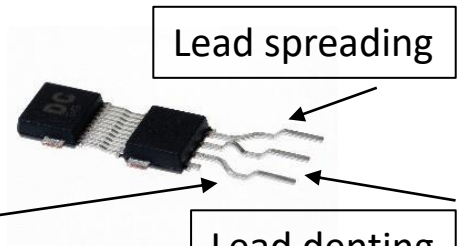
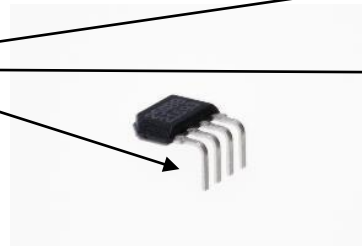


Bleed/Flash removing



→ Input material

Cutting  
Spreading  
Forming



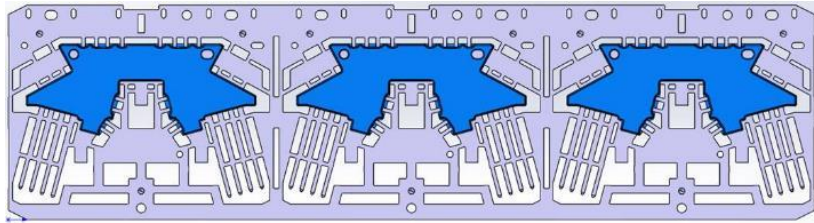
Lead spreading

Lead denting

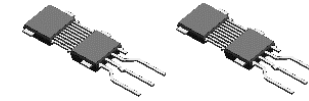
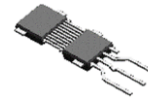


# STRATEGY

## Business strategy



↳ LF Design



**Development**



**Samples making**



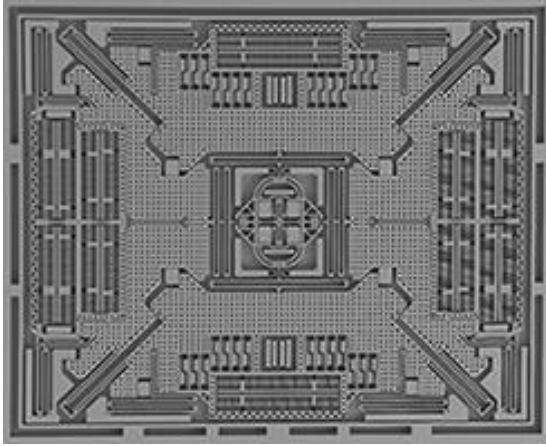
**Volumes equipment**

*Technology Share*

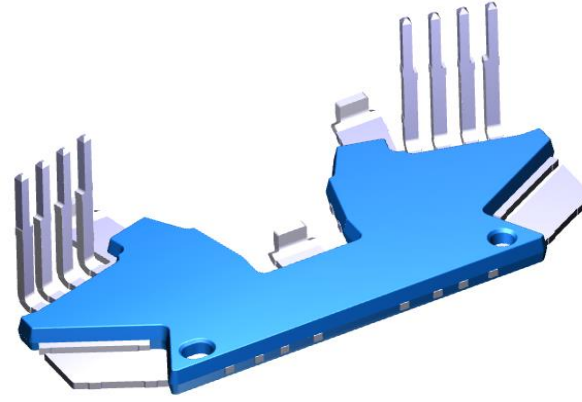
*Cost of Ownership*

*Gain trust*  
*Be punctual*  
*Deliver quality* | *Deliver service*  
*Deliver equipment*

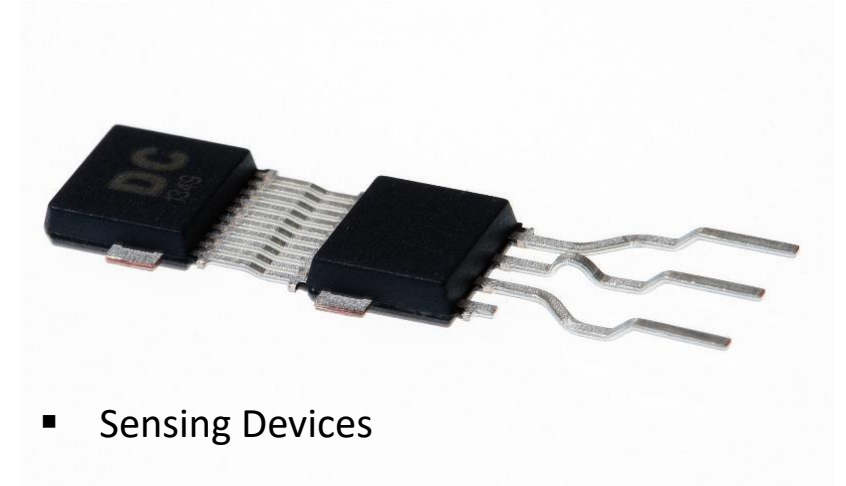
# THE PRODUCT Applications



- MEMS  
(Microelectromechanical System)



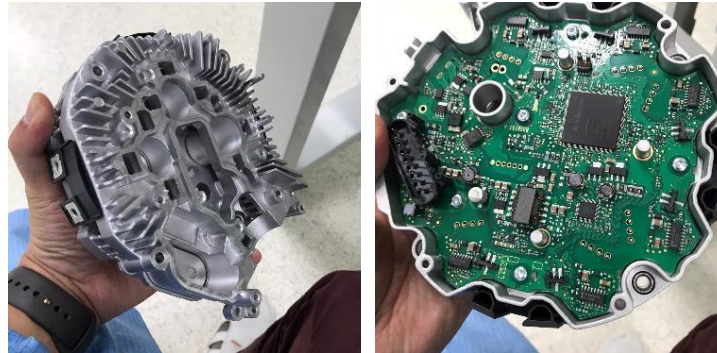
- Power Devices



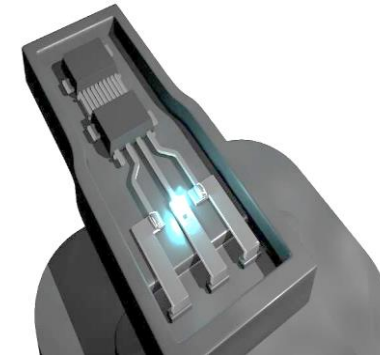
- Sensing Devices



- IR Thermal Sensor



- Drive Circular Electronic Cars

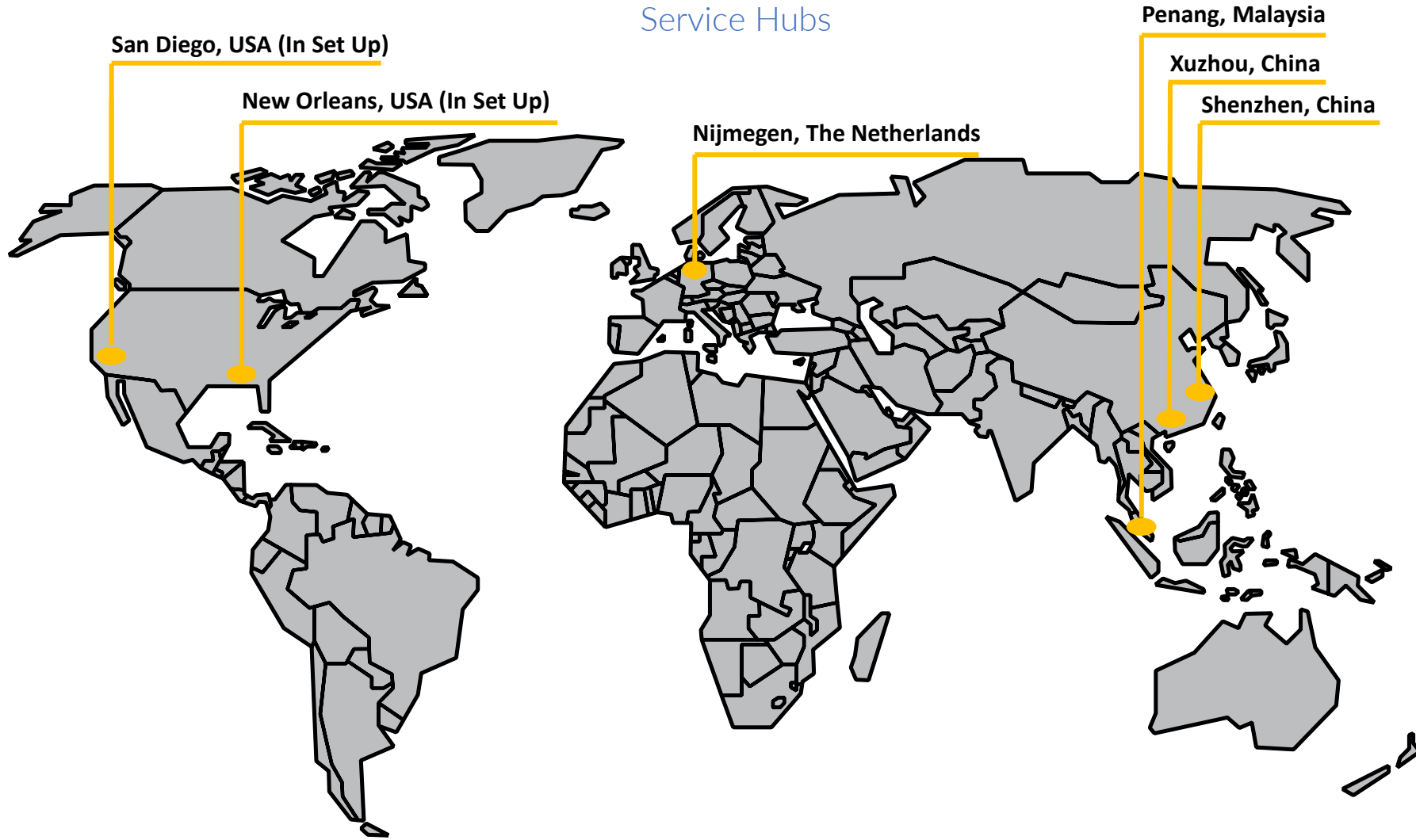


- Speed Sensor Applications

Confidential



ORGANIZATION  
Service Hubs



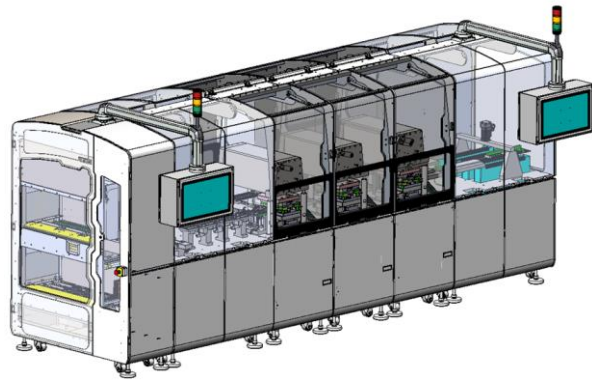
Confidential



# PRODUCT Portfolio

**High Volume  
Double Track**

For standard  
packages like  
SO/SOT/SOP/QFP



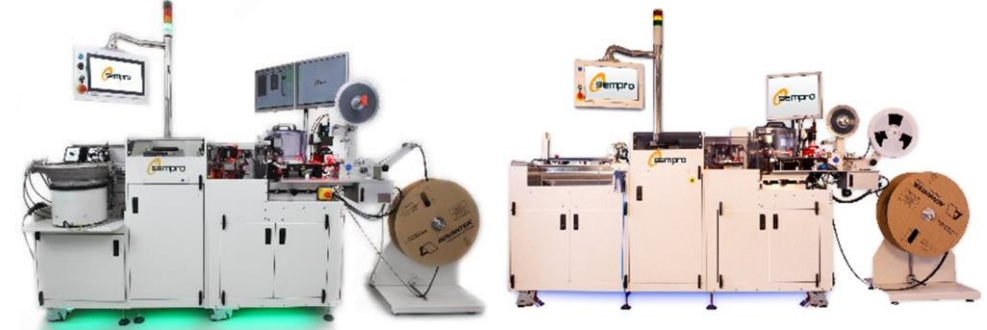
**Power X1 Family**

For Power IBSG or IPM



**Cooper EM4000-  
5000**

For different sensing  
applications



Confidential



# 6. Mobile Robotics – AMR versus AGV

## AMR Technology

### LiDAR SLAM

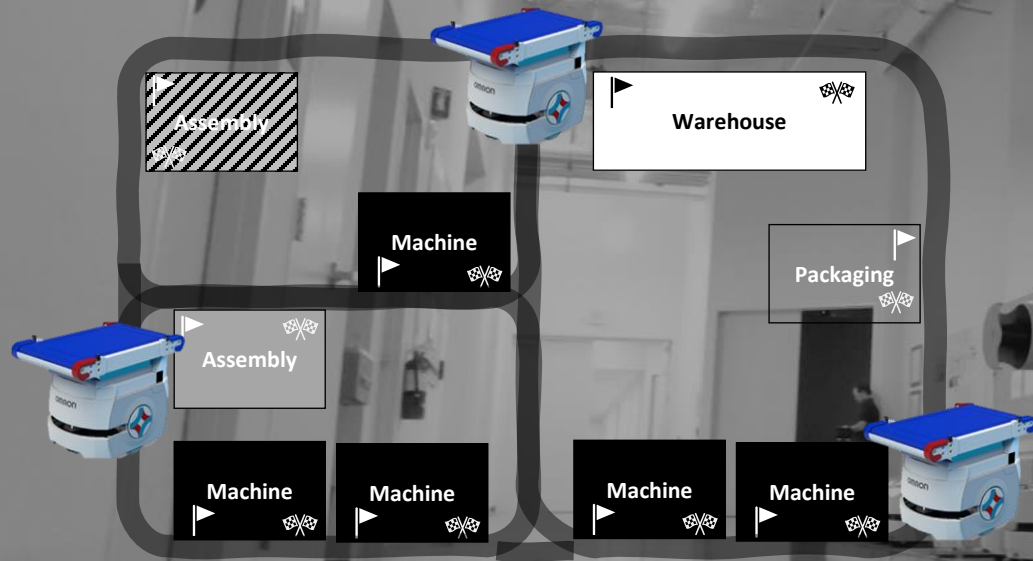
OMRON



OMRON



### Visual SLAM



AMR Mapped Path/ Layout

Total System Flexibility

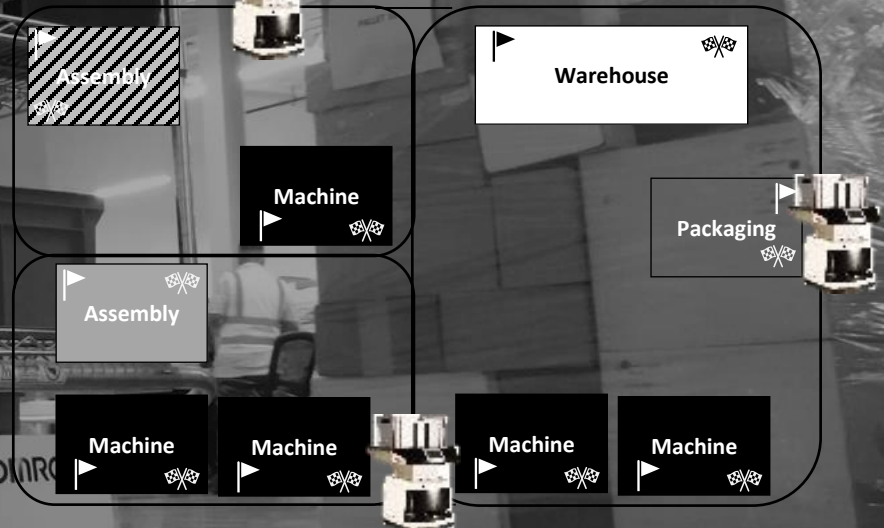


## AGV Technology

### Non-Free Ranging



### Free Ranging



Virtual or fixed Path/ Layout

Full Layout Accuracy





## Challenges Photonics

- Package surface cracks
- Innerbody cracks
- Surface pollutions during the process of trim and form / singulation
- Sensitivity during mechanical clamping on body- carrier
- Lead deformations
- We all need extreme precise solutions and Sempro is able to adopt to these needs in the field of trim – form and Singulation

Sempro tooling and equipment is taking care of above challenges.

---

Confidential





## COMPANY CONTACT US



### Address

Roggeweg 28  
6534AJ, Nijmegen  
The Netherlands



### Address

15A Lintang Sungai Tiram 5  
Sunway Prima  
11900 Penang Malaysia



### Address

Bld. #3, Jinlonghu Renovation Valley,  
No. 1, East Jinlonghu Road, Xuzhou  
Economic & Technological  
Development Zone, China



### Contact Info

E-mail: [info@sempro.nl](mailto:info@sempro.nl)  
Sales: [sales@sempro.nl](mailto:sales@sempro.nl)  
Support: [support@sempro.nl](mailto:support@sempro.nl)



### Contact Info

E-mail: [sales@sempro.asia](mailto:sales@sempro.asia)



### Contact Info

E-mail: [sales@sempro.asia](mailto:sales@sempro.asia)



### Telephone

Office Phone: +31 (0) 487 511863  
Sales: +31 (0) 487511863  
Support: +31 (0) 487 511863



### Telephone

Office Phone: +604 6442235



### Telephone

Office Phone: 18994942368

