



Smart Industry NL Status and Ambitions

Peter van Harten – Smart Industry Japan & Netherlands 19-08-21



How to survive in
a complex world?



We need to
rethink how we
live, work,
produce,
recycle

How do we stay
competitive?

Smart Industry
can play a big
role in this!



Productivity



Circular



Competitiveness



Skills



Covid



Asymmetric
Competition



Technology
Leadership



Economic Safety

How to deal with
increasing
(product)
complexity?

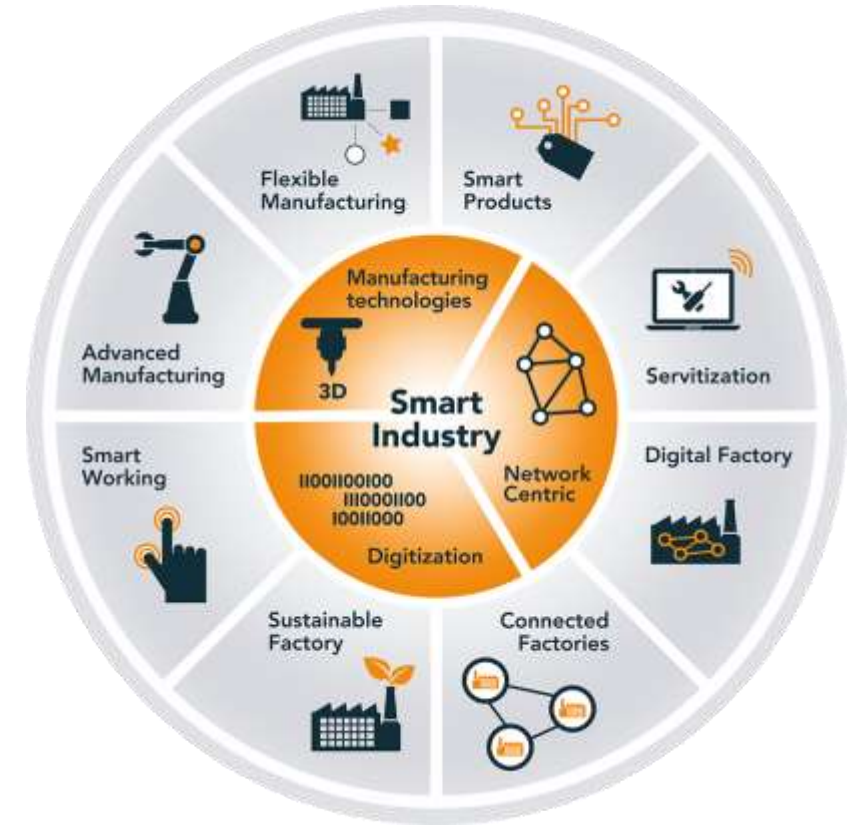
Answer:

- Technology
- Innovation
- Smart Industry
- Collaboration

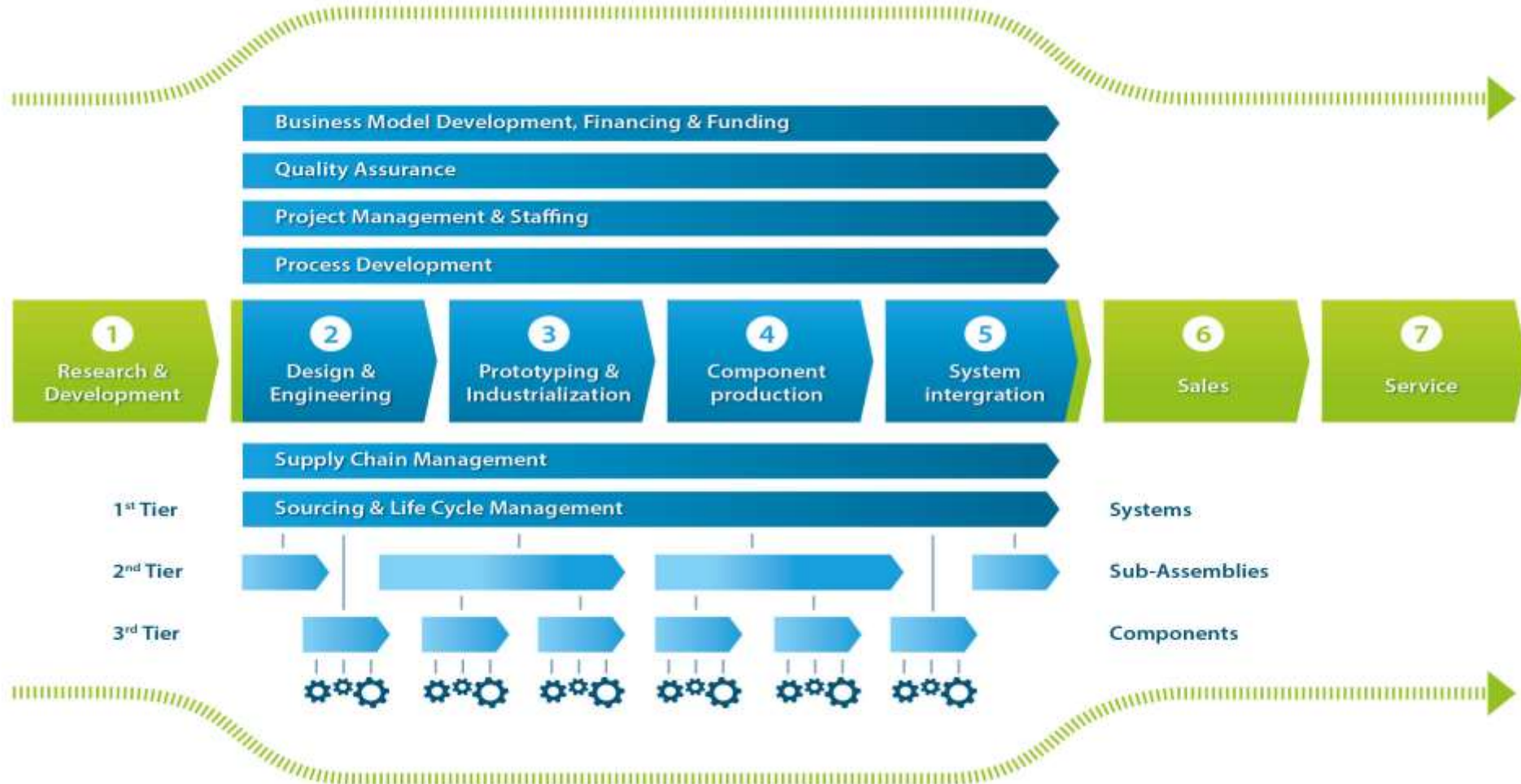


Our goals and focus:

The Netherlands has developed one of the best and most flexible digitally connected, **secure** and **circular** production networks in Europe



Collaboration in the High-Tech Eco System



Clever platforms in the Industry

ON DEMAND. ON TIME. [JOIN US](#) [ABOUT 24/7TAILORSTEEL](#) [SERVICE](#) [NEWS](#) [CONTACT](#) English Search

24/7 TAILOR STEEL [REGISTER FOR SOPHIA®](#)

MACHINING METALS MACHINE PARK PLUG-IN SUBMISSION RULES AND GUIDELINES

SOPHIA®

Order custom-made metal plates, tubes and bent products. 24 hours a day, 7 days a week.

Not a customer yet? Create a free account by registering for Sophia®

[REGISTER FOR SOPHIA®](#)

[Download Sophia® software](#)

Sophia instruction video (FEM)

Sophia®: your online assistant

With Sophia® you can easily and quickly order your tailor-made products at 24/7TailorSteel. With its many functionalities, Sophia® (SOPHIA-based Intelligent Analyzer) represents the latest generation of software.

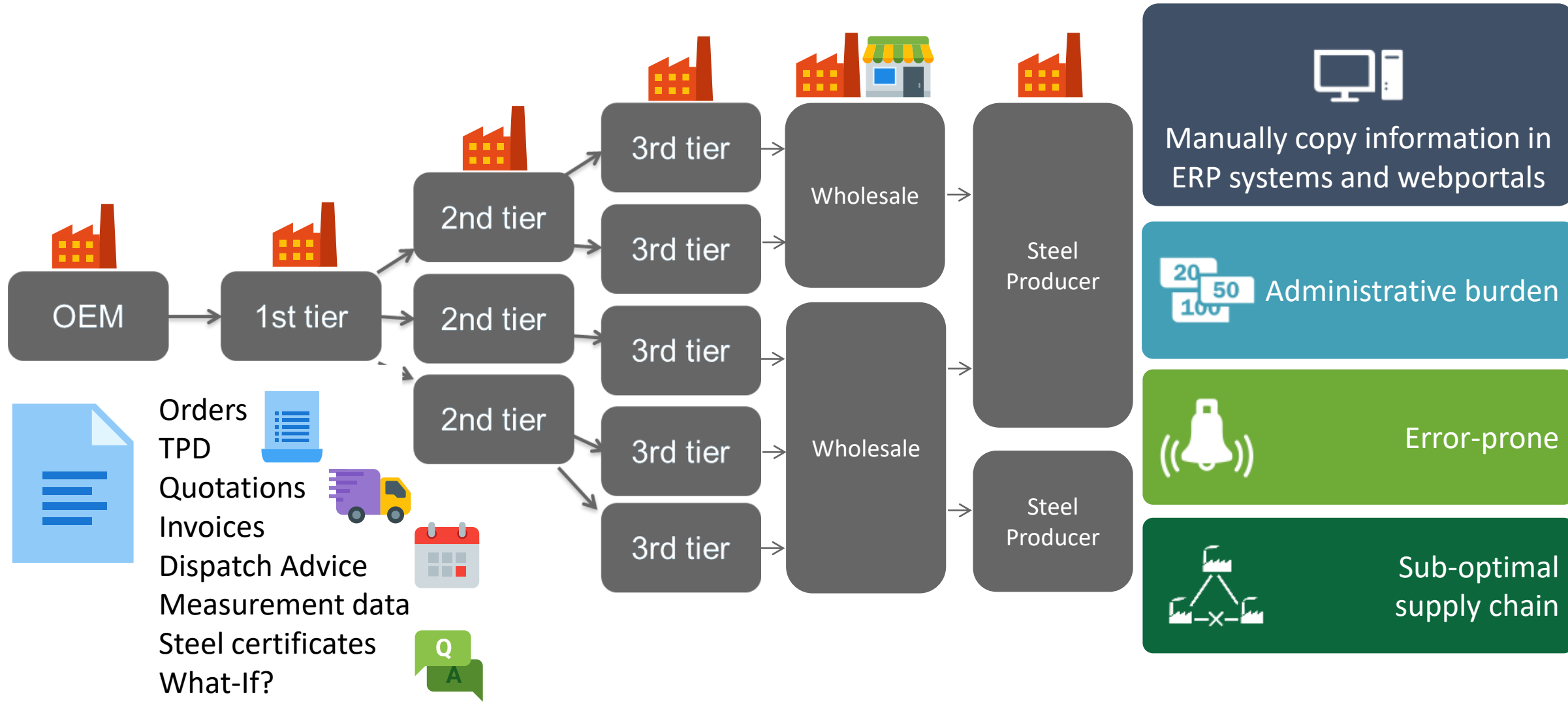
Sophia® works with artificial intelligence, which controls the production and logistics. This is how she generates laser-cut metal plates, tubes and bent products in a jiffy. All this, without human interference. Business customers can use the online tool 24 hours a day, 7 days a week.

Save costs and time

- ✓ A quote in less than 1 minute
- ✓ Orders start at 1 item
- ✓ Request quotations, place orders and receive a breakdown of your costs 24/7
- ✓ Access to more than 50 types of material
- ✓ Laser cutting and bending in one order

Average delivery time: **from 2 business days***

CONNECTED FACTORIES - Datasharing



Sharing instead of reinventing the wheel



A person wearing a dark hoodie is shown from the side, focused on typing on a laptop. The scene is bathed in a blue light, and the background is a dense, glowing grid of digital data points, suggesting a cyber or network environment. The text is overlaid on the right side of the image.


Support SME's
cyber resilience in an
open ecosystem



Smart Industry – Japan- Netherlands Opportunities




Joint Global Challenges




Manufacturing Technologies:

- Additive Manufacturing
- Robotics
- Advanced Materials



Improve Supply Chain:

- (Digital) connected Supply Chains
- Digital Twin Platform (CPS)



Enabling Technology:

- Standards

Cross sectoral joint areas of opportunity

Needs/Drivers:

Technology:

- Lower costs
- Better performance
- More flexibility
- Decrease dependencies
- Advanced materials
- High Volume 3D Printing

Value Chains in the High-tech Industry:

- More integrated and robust
- Decrease dependencies
- Lower costs (Digital Twin)
- Secure data sharing (incl. cyber)
- Increase predictability

Enabling new business models and circularity

- Lower use of energy
- Sensing and energy harvesting
- Battery challenge

Ideas for NL-Japan collaboration

- Expert Dialogues -> Taskforce
- Joint action plan / roadmap 2-3 years
- Joint projects / Fieldlabs
 - Digital Twin and datasharing in the value chain
 - Cyber security in the value chain
 - xxx
- Annual review and renewal

Thank You!



Peter van Harten

Smart Industry Program

peter.van.harten@smartindustry.nl

p.vanharten@isah.com

M: +31 6 29531479

www.smartindustry.nl

www.isah.com

isah
BUSINESS SOFTWARE

